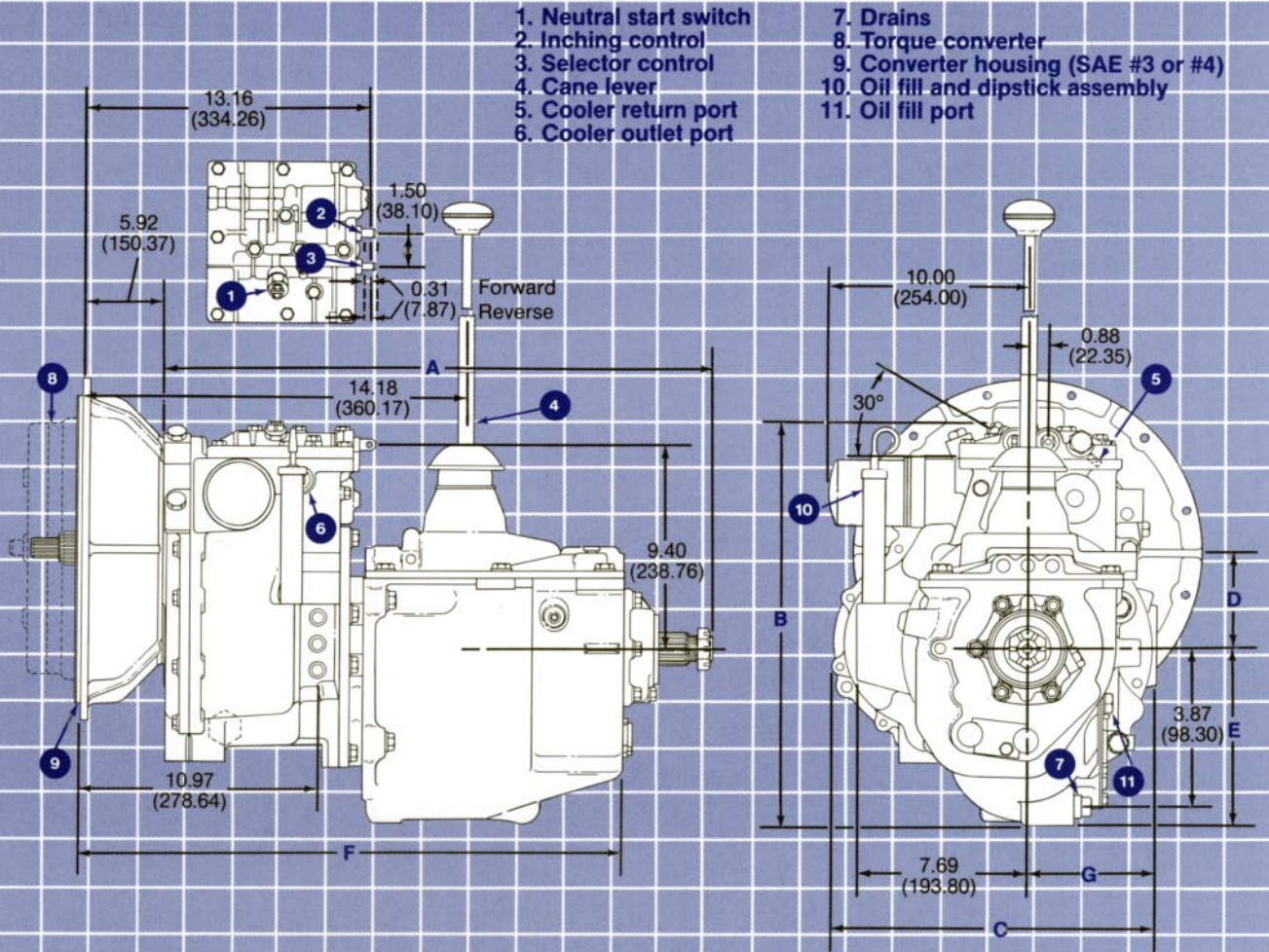


PR1/T19 Assemblies



PR1/T19 Dimensions inches (millimeters)

Dim. A	Dim. B	Dim. C	Dim. D	Dim. E	Dim. F	Dim. G
25.18 (639.57)	18.95 (481.33)	14.88 (377.95)	4.51 (114.55)	8.22 (208.79)	15.61 (396.49)	5.88 (149.35)

PR1/T19 Specifications nominal (subject to change without notice)

Ratio* PR1	0.97, 1.09, 1.22:1
T19 (1st, 2nd, 3rd, 4th)	6.32, 3.09, 1.68, 1.00:1
Weight (dry, less converter)	335 lbs. (152.0 kg)
Controls , selector	mechanical-standard electrical-optimal
inching	single spool-standard
1st thru 4th	cane lever-standard
Spline , input	29 tooth, external involute
output	10 tooth, internal involute, flat root, side fit 16/32 D.P., P.A., P.D.
Oil filter	standard
Auxiliary pump drive (see page 12 for installation information)	SAE B, 2 or 4 bolt, 60 hp. (44.7 kW) max.-optional
Parking brake	band type on output flange drum-optimal

*For other ratio possibilities contact Velvet Drive Transmissions.