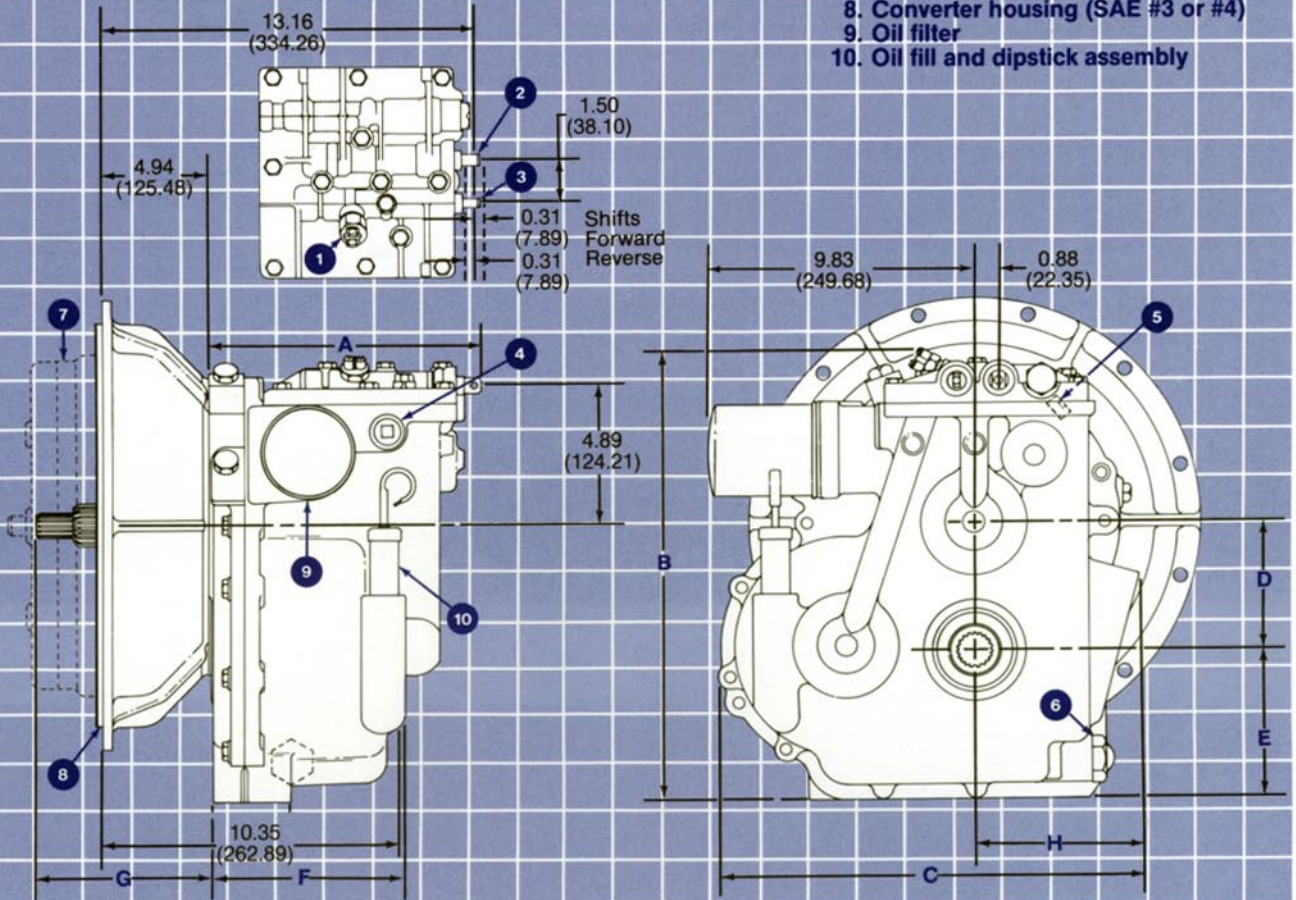


PR1 Assemblies

1. Neutral start switch
2. Inching Control
3. Control Selector
4. Cooler return port
5. To Cooler
6. Drain
7. Torque converter (optional)
8. Converter housing (SAE #3 or #4)
9. Oil filter
10. Oil fill and dipstick assembly



PR1 Dimensions inches (millimeters)

Dim. A	Dim. B	Dim. C	Dim. D	Dim. E	Dim. F	Dim. G	Dim. H
9.56 (242.82)	15.97 (405.64)	14.75 (374.65)	4.51 (114.55)	5.24 (133.10)	6.89 (175.01)	6.28 (159.51)	5.75 (146.05)

PR1 Specifications nominal (subject to change without notice)

Ratio*	1.09, 1.22:1
Weight (dry, less converter)	175 lbs. (79.4 kg)
Controls, selector	mechanical electrical-optional
inching	mechanical
Spline, input	29 tooth, external involute
output	19 tooth, internal involute, flat root, side fit 16/32 D.P., 30° P.A., 1.1875 P.D.
Oil filter	standard

*For other ratio possibilities contact Velvet Drive Transmissions.